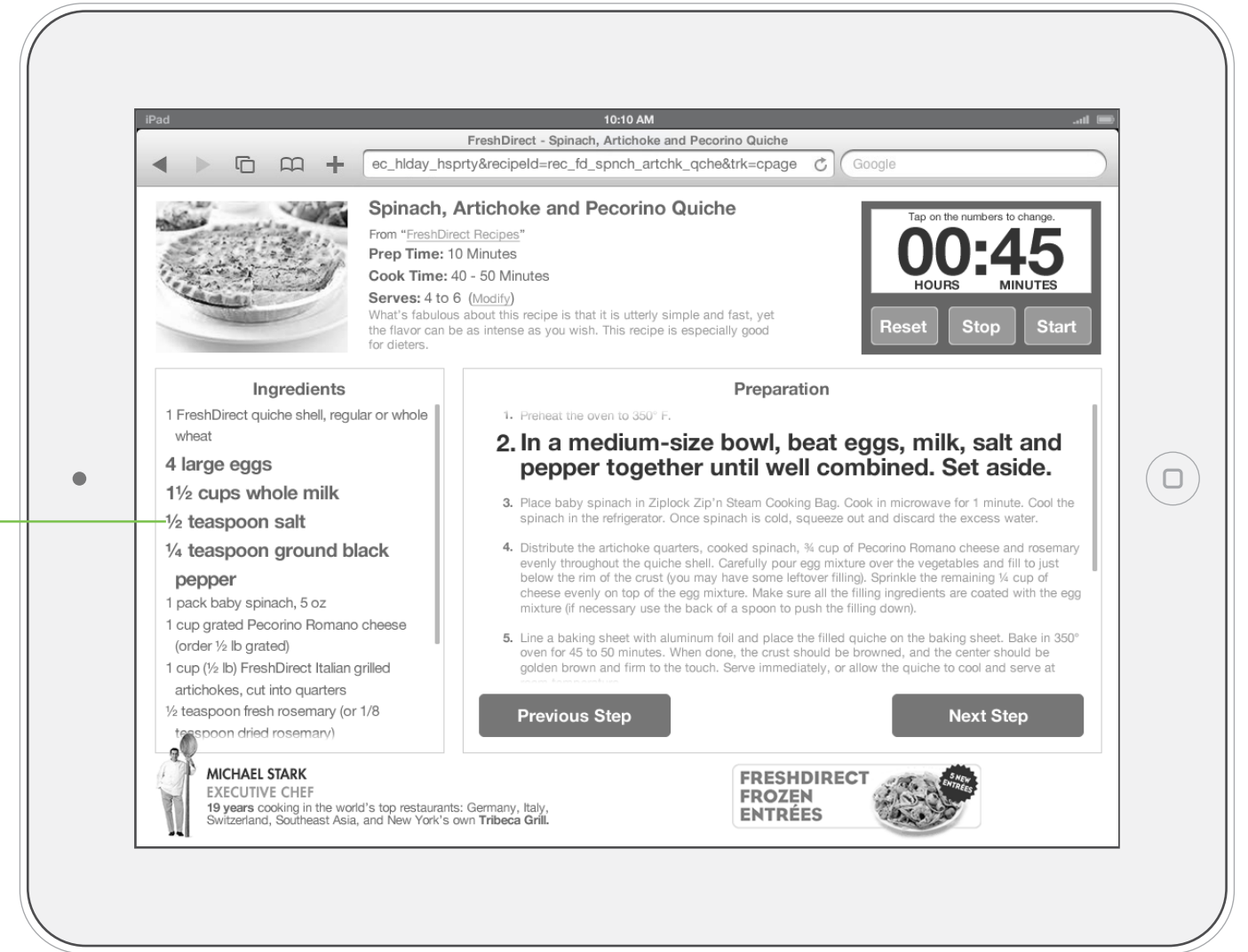
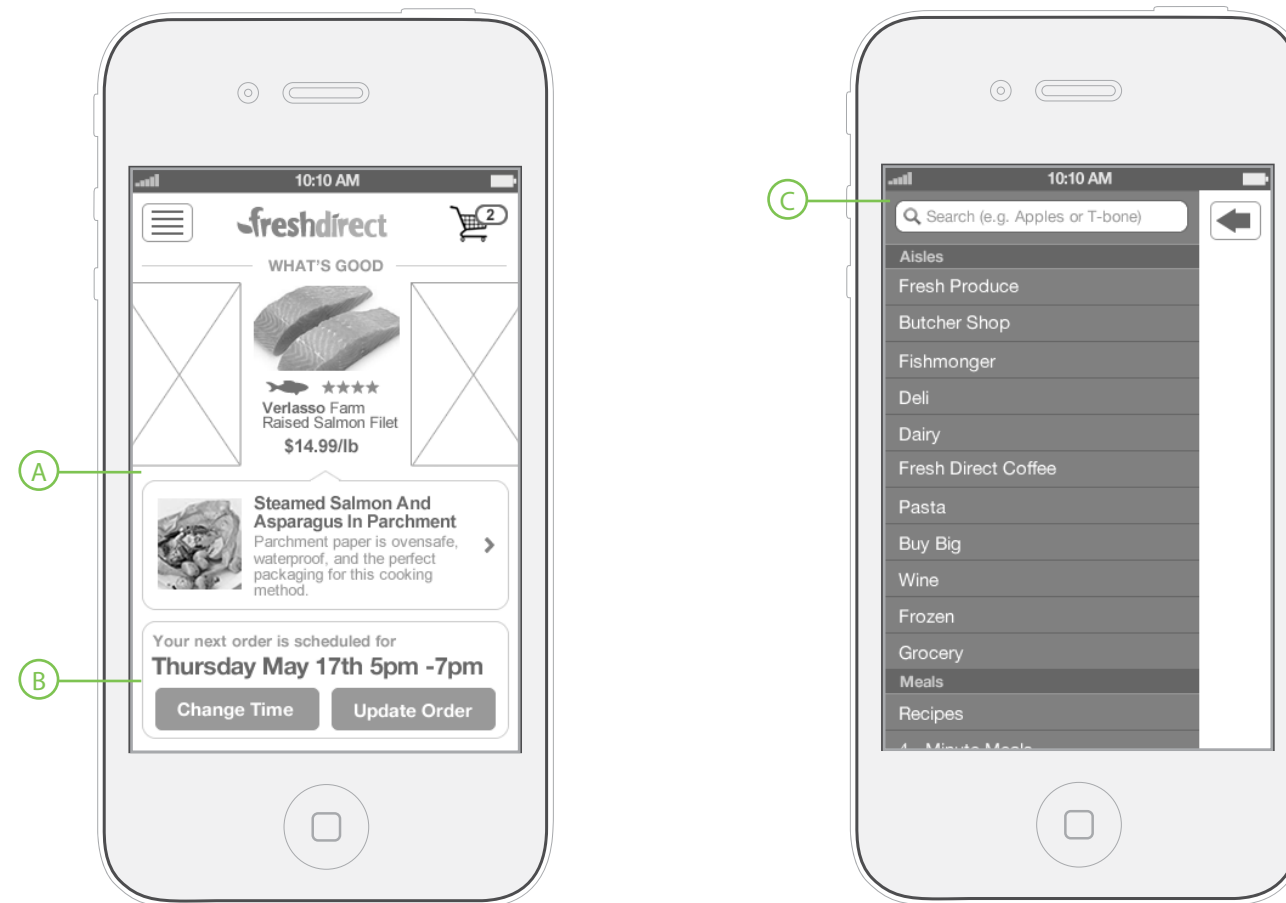


- A** Links to the What's Good, Recipes, Easy Meals and Catering pages. Easy Meals will link to a landing page with separate sections for 4 minute meals, Ready-to-cook and Heat and Eat
- B** Search will utilize predictive results.
- C** Aisle navigation.
- D** Promotional area.
- E** Aisle Navigation.
- F** Footer links. Includes an additional pivot point at the bottom of all pages.
- G** Greeting and link to access user's account.
- H** Clicking on view cart will reveal the user's cart by expanding the bar and showing all items in the cart in a grid view.

Search/Cart bar will be "sticky" and fix to the top of the page on scroll. This will make search available at all times as well as give the user a visual of recently added items to the cart.
- I** Promotional area.
- J** Top level navigation will combine into a drop-down style menu for handsets.
- K** The promotional area will utilize assets from the full desktop website.



- A** Ingredients List
- B** Simple timer
- C** Current step is highlighted.
- D** Tapping Next Step will highlight the next step.
- E** Ingredients used in the current step will also be highlighted.



- (A) What's Good Promotion with related items / recipes.
- (B) Upcoming delivery notification with the ability to change the delivery time as well as make updates to the order.
- (C) Navigation menu with Search and barcode scan.